

## Application Note No. AP 2010/21-2

Date: 28.05.2010

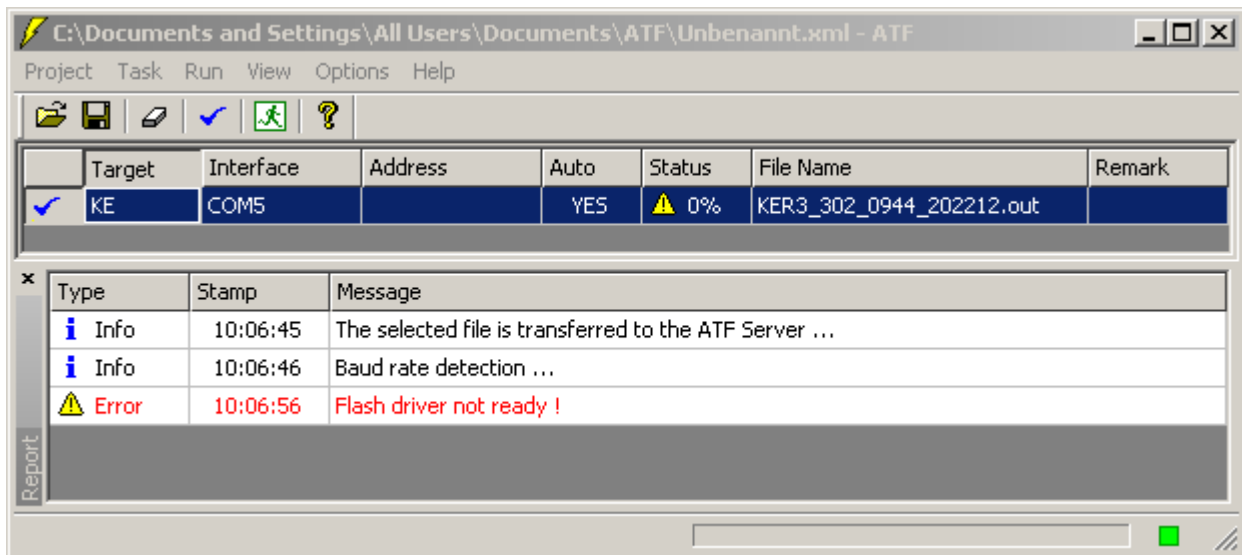
Author: LeV/KoJ

File name: AP\_2010\_21-2e

Rights reserved to make technical changes

### Topic: ATF Toolflasher with USB-RS232 Interface (O748)

By using ATF Toolflasher with USB-RS232 Interface (O748) together with the Windows virtual COM interface default settings can abort the flash function. See screen shot:



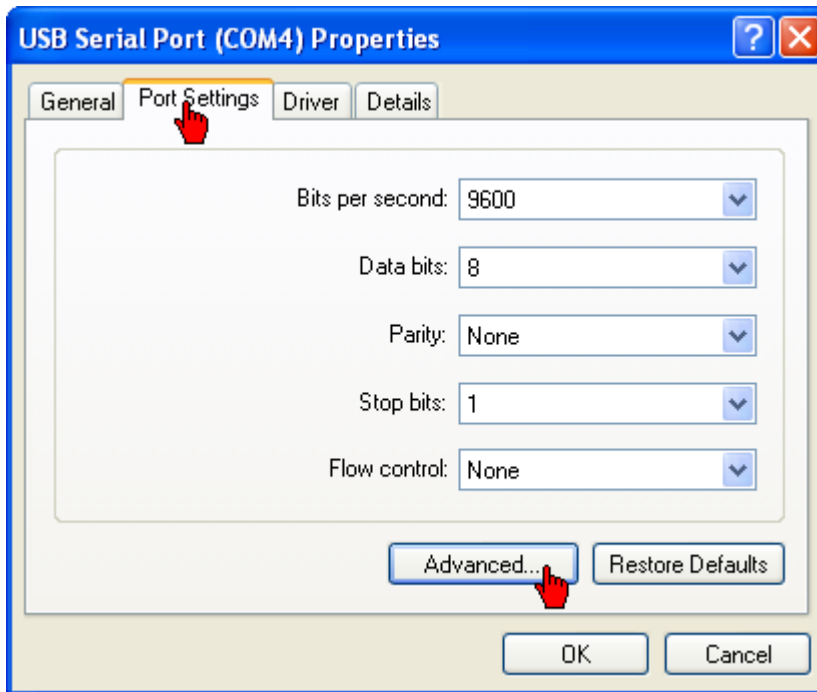
Picture name: ZCH\_AP\_2010\_21\_1

To ensure proper operation should be done the following:

#### Adjusting the Receive Buffer Latency Timer

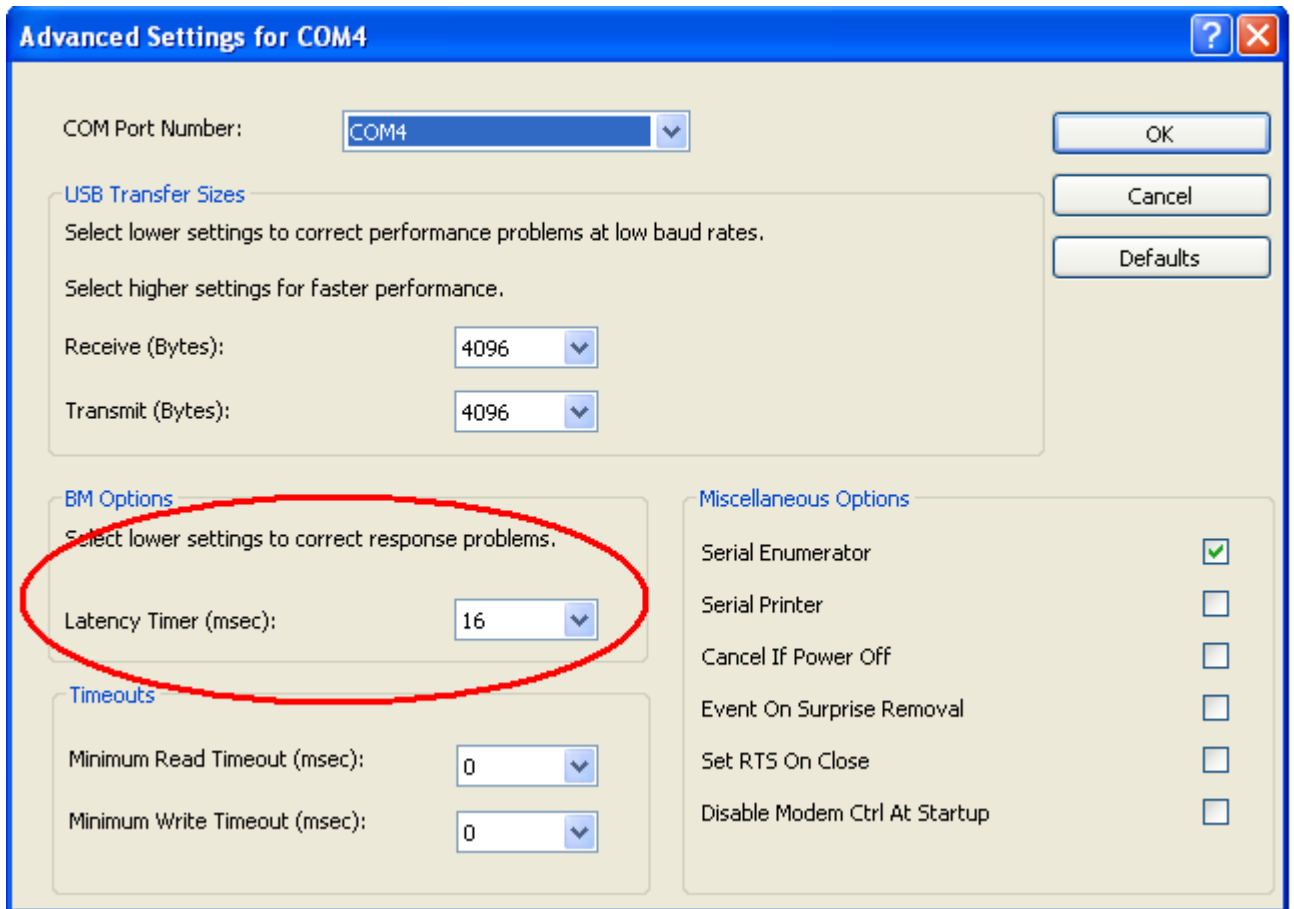
The latency timer must be changed from 16 milliseconds to 1 millisecond. When using the FTDI Virtual Com Port driver the latency timer can be set in the port properties page. In Windows the port properties page is accessed via the device manager (go to "Control Panel > System" then select the "Hardware" tab and click "Device Manager...", or "Control Panel > Device Manager" in Vista).

Find the USB serial port you want to change the properties of and right click on it. Select "Properties" from the menu then select the "Port Settings" tab.



Picture name: ZCH\_AP\_2010\_21\_2

Change the Latency Timer from 16 milliseconds to 1 millisecond.  
Then press OK.



The image shows a Windows-style dialog box titled "Advanced Settings for COM4". The dialog has a blue title bar with a question mark icon and a close button. The main content area is light beige. At the top, there is a "COM Port Number:" label and a dropdown menu showing "COM4". To the right of this are three buttons: "OK", "Cancel", and "Defaults". Below the port number is a section titled "USB Transfer Sizes" with the instruction "Select lower settings to correct performance problems at low baud rates. Select higher settings for faster performance." It contains two dropdowns: "Receive (Bytes):" and "Transmit (Bytes):", both set to "4096". Below this is a section titled "BM Options" with the instruction "Select lower settings to correct response problems." This section contains a dropdown for "Latency Timer (msec):" set to "16", which is circled in red. Below the "BM Options" section is a "Timeouts" section with two dropdowns: "Minimum Read Timeout (msec):" and "Minimum Write Timeout (msec):", both set to "0". To the right of the "BM Options" and "Timeouts" sections is a "Miscellaneous Options" section with five checkboxes: "Serial Enumerator" (checked), "Serial Printer", "Cancel If Power Off", "Event On Surprise Removal", and "Set RTS On Close" (all unchecked), and "Disable Modem Ctrl At Startup" (unchecked).

Advanced Settings for COM4

COM Port Number: COM4

OK

Cancel

Defaults

USB Transfer Sizes

Select lower settings to correct performance problems at low baud rates.  
Select higher settings for faster performance.

Receive (Bytes): 4096

Transmit (Bytes): 4096

BM Options

Select lower settings to correct response problems.

Latency Timer (msec): 16

Timeouts

Minimum Read Timeout (msec): 0

Minimum Write Timeout (msec): 0

Miscellaneous Options

Serial Enumerator ☒

Serial Printer ☐

Cancel If Power Off ☐

Event On Surprise Removal ☐

Set RTS On Close ☐

Disable Modem Ctrl At Startup ☐

Picture name:ZCH\_AP\_2010\_21\_3